



IndianaMap ArcGIS online County Timeline Story Map Template.

Phil Worrall, PI, Indiana Geographic Information Council (IGIC), (E-Mail: pworrall@igic.org)

Chris Dintaman, GIS Specialist, Indiana Geological Survey (E-Mail: cdintama@indiana.edu)

Matthew Johnson, Cartographic Coordinator, Indiana Geological Survey (E-Mail: mrj21@indiana.edu)



Overview: On December 11, 1816, President James Madison signed the act admitting Indiana to the Union, a date we now celebrate as Statehood Day.

Indiana's 2016 Bicentennial celebration aims to honor our state's 200 years of history, and to do so in a modern way that engages all 6.5 million Hoosiers and leaves a lasting legacy for future generations.

The Geography Educator's Network of Indiana (GENI) is helping celebrate Indiana's Bicentennial with the creation of 92 custom 10'x10' County maps - on vinyl, produced in partnership with the IndianaMap developers and hosts at the Indiana Geological Survey (IGS). Each map also includes a custom timeline depicting a chronology of historic County events aligned with Indiana and U.S. / World events.

To complement GENI's printed County Map and Timelines being creating, the IGIC team developed an ArcGIS Online Story Map Template with Timeline for Counties to publish these maps as an interactive online map experience. IGIC worked with the IGS IndianaMap partners to complete this project.

Results: The IGIC Team has designed and developed an Esri ArcGIS.com map template using IndianaMap layer REST services, plus documenting methods to include additional local (County) data map layer[s] used to create the Counties printed Bicentennial Maps and Timelines. The IGIC Team designed, developed and documented an ArcGIS.com Timeline / Story Map Application template using existing FREE Esri ArcGIS.com online resources, the existing and custom GIS data layers, and the Adobe PDF Timeline document created by GENI.

The IGIC team created ArcGIS online County Timeline Story Maps for two representative Indiana counties (Tippecanoe, and Porter), and publish these as public resources on ArcGIS.com. IGIC will also record an educational webinar on this process for a third Indiana County and make this freely available on the IGIC web site to support the Indiana Bicentennial efforts.

FOR FURTHER READING:

- For information about Indiana's Bicentennial Celebration, go to - <http://www.in.gov/ibc/>
- For information about The GENI printed County Map and Timelines go to - <http://www.iupui.edu/~geni/>
- For information about the IndianaMap ArcGIS online County Timeline Story Map Templates, go to - <http://www.igic.org/indianamap-arcgis-online-county-timeline-story-map-template/>

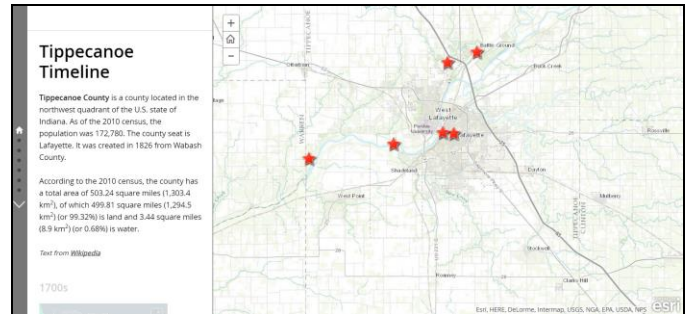


Figure 1: IndianaMap Tippecanoe County Map Template [\[LINK\]](#)



Figure 2: Tippecanoe County Timeline Map Example

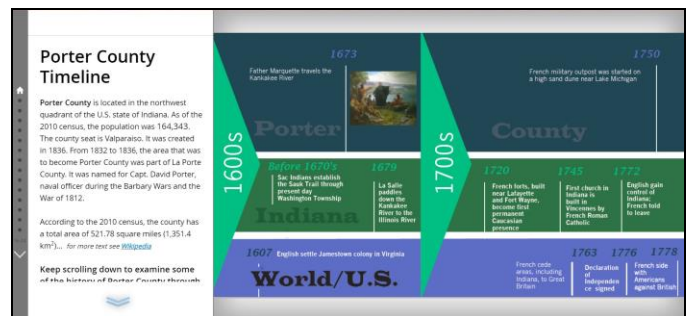


Figure 3: Porter County Timeline Map Template [\[LINK\]](#)



Figure 4: IndianaMap Porter County Map Example