

# INDIANAMAP OUTREACH & PRESENTER MATERIALS

**Philip Worrall, and Jennifer Dubeansky,**  
**Indiana Geographic Information Council (IGIC)**  
(E-Mail: [info@igic.org](mailto:info@igic.org))

The IndianaMap is a collection of projects and resources aimed at making Indiana's spatial data available to both GIS users and the general public. The IndianaMap website ([www.indianamap.org](http://www.indianamap.org)) is the project's portal to tools to view, download and connect to Indiana's GIS data. This site provide access to individual datasets and metadata for over 260 unique layers organized in categories from demographics, environment, geology, government, hydrology, imagery, infrastructure, to reference layers.

Making the IndianaMap a success involves not only technical and coordination activities, but public outreach, as well. The data's full value is only realized when people are aware of how to access and use it. This means not only having a web presence, but educating people about the resources it offers. One of the best ways to do that is through digital and hardcopy outreach materials.

In the past year, several exciting developments have made it important to create a new series of outreach materials. New statewide LiDAR and Orthophotography data is being collected and published in 2011 through 2013. These new data provides vital new aerial photography and 3D elevation information serve as a highly accurate and up to date base map and backdrop for all users of the IndianaMap. Additionally, the IndianaMap website and viewer have undergone substantial redevelopment. The new functionality includes ...

Desktop & Mobile Viewing - <http://maps.indiana.edu>  
Layer Gallery - <http://maps.indiana.edu/layerGallery.html>  
Map Gallery - <http://maps.indiana.edu/mapGallery.html>  
Web Services - <http://maps.indiana.edu/arcgis/rest/services>  
and access to a new...  
OpenTopography LiDAR Server - <http://bit.ly/Xwy86P>

This IGIC project is sponsored in part by an IndianaView grant to help update our web site content and create postcards and a pamphlet to support these new IndianaMap developments. Both the postcard and pamphlet formats have proven to be very successful, and were specifically requested by IGIC's Orthophotography and Elevation Data Workgroups to support these new statewide data collection projects and the new IndianaMap website design.

These new materials are being distributed at various conferences around the state by IGIC staff, our members, and our education partners. Digital copies are also available for download on the IGIC website and emailed to partner organizations upon request.

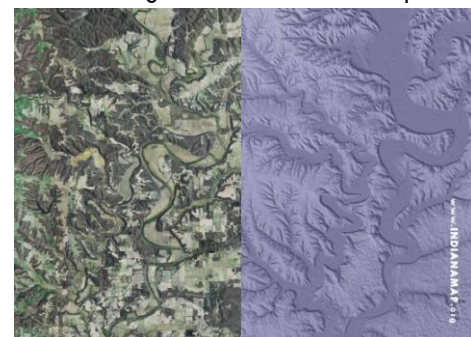
**Figure 1:** IndianaMap content updates and a new IndianaMap educational pamphlet were developed as part of this grant.



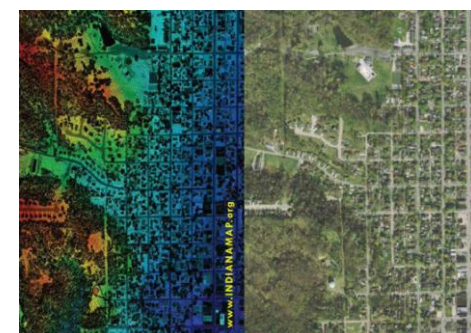
**Figure 2:** New Orthophotography and LiDAR data educational postcard were also developed as part of this grant.



LiDAR image of downtown Indianapolis



Lawrence County, IN aerial photography and digital elevation model



LiDAR and aerial photography of Martinsville, IN