



Multi-file Download of GIS Data from the Indiana Spatial Data Portal

University Information Technology Services
Indiana University
(E-Mail: uitsgis@indiana.edu)

PROJECT INFORMATION:

The Indiana Spatial Data Portal (ISDP) is a near-line data archival and distribution system that provides download access to a variety of geographic data for Indiana. The ISDP:

- includes more than 20 Terabytes of data
- presents data through an easy-to-use interface (Figure 1)
- provides data at no cost
- makes data readily available to the general public

The ISDP uses Indiana University's Scholarly Data Archive (SDA) system. The SDA

- is a state-of-the-art data storage system
- has extensive capacity (4.2 petabytes)
- is a geographically distributed, disaster-tolerant system
- is designed to provide long-term (>20 years) data storage
- is linked to high-performance networks
- provides fast data transfers

AVAILABLE DATA:

The data archive includes both statewide and local data. Statewide data include aerial photographs, topographic maps and digital elevation data. Local data include high-resolution aerial photography for many Indiana counties, Camp Atterbury, and Muscatatuck. The newest addition to the ISDP is Indiana's 2010 NAIP orthophotography.

COLLABORATORS:

Groups contributing data and resources to develop and maintain the Indiana Spatial Data Portal include:

- Indiana University
- IndianaView Consortium
- Natural Resources Conservation Service (NRCS)
- Indiana Geographic Information Council (IGIC)
- Indianapolis Mapping and Geographic Infrastructure System (IMAGIS)
- City of Bloomington, Indiana
- Many Indiana Counties

WHERE TO FIND IT:

Point your Web browser to: gis.iu.edu

See the ISDP tutorials for additional help.

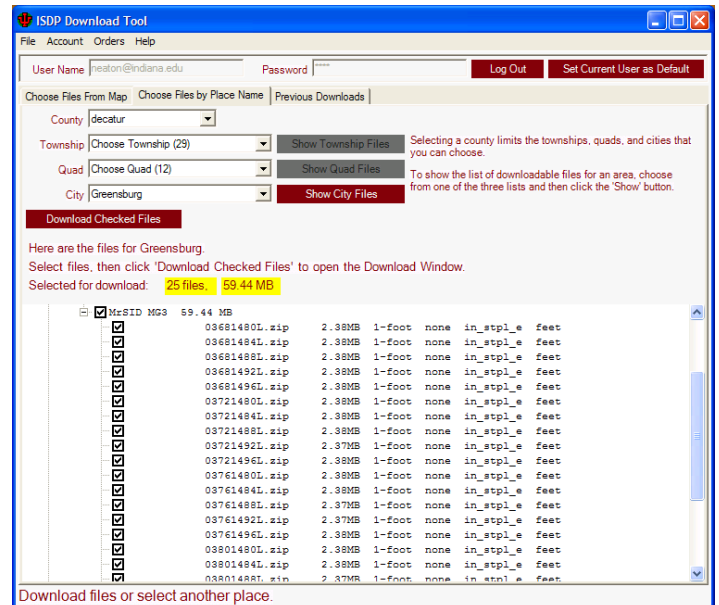


Figure 1. Interactive index map used to locate topographic maps or aerial photographs for download. Simply point and click on the index map to view a list of available files for a given area.

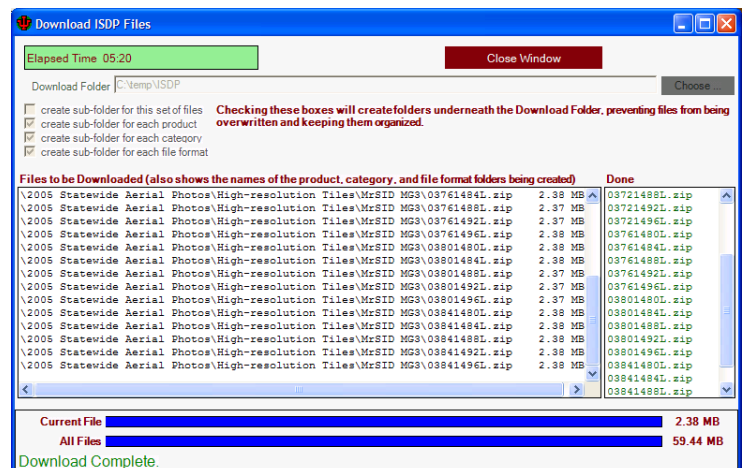


Figure 2. Sample image downloads