



## Multi-file Download Tool for the Indiana Spatial Data Portal

Data Management Support Unit, University Information  
Technology Services, Indiana University  
(E-Mail: [uitsgis@indiana.edu](mailto:uitsgis@indiana.edu))

### PROJECT INFORMATION:

The Multi-file Download Tool automates the process of downloading multiple image files from the Indiana Spatial Data Portal (ISDP). This tool facilitates the distribution of the 2005 orthophotography data and enhances access to other ISDP data by providing an effective interface for coping with the large number of files in the growing ISDP repository.

The Indiana Spatial Data Portal:

- includes more than 7.5 terabytes of data and nearly 175,000 distinct files;
- provides data at no cost;
- makes data readily available to the general public.

The ISDP Multi-file Download Tool:

- helps locate specific files of interest;
- allows multiple files to be downloaded based on a single order;
- provides efficient file transfer from the ISDP, even for very large files.

### WHAT CAN I DOWNLOAD WITH THE TOOL?

The ISDP Multi-file Download Tool provides access to all files in the ISDP repository, including:

- 2005 natural color and color-infrared aerial photos;
- 2005 digital elevation data;
- 2003 color aerial photos (leaf-on) (NAIP);
- 1998-1999 black and white aerial photos (DOQQs);
- U.S. Geological Survey topographic maps (DRGs);
- high-resolution aeriels for Bartholomew, Hamilton, Marion, Monroe, and Wayne Counties;
- several additional local data sets.

### WHY USE THE TOOL?

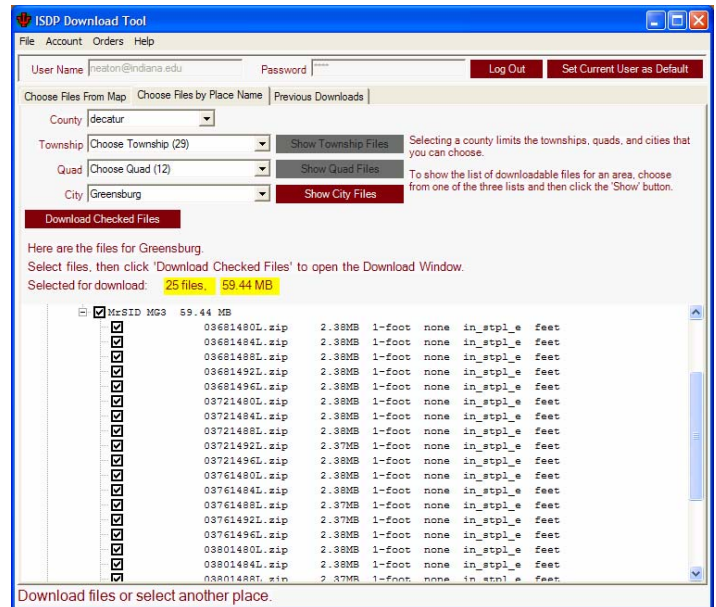
The ISDP Multi-file Download Tool facilitates the acquisition of aerial photos, elevation models, and topographic data by:

- providing effective tools for locating files of interest;
- grouping files into “orders” that can be downloaded automatically;
- processing orders in the background or after hours.

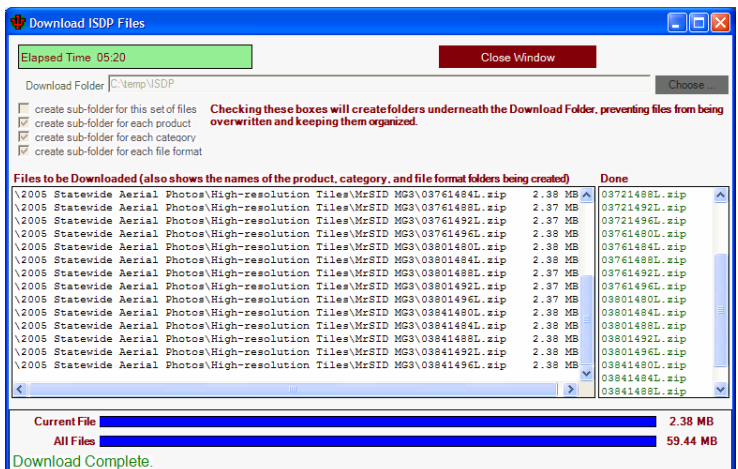
### WHERE TO FIND IT:

Point your Web browser to:

[http://www.indiana.edu/~gisdata/isdp\\_tool.html](http://www.indiana.edu/~gisdata/isdp_tool.html)



**Figure 1.** The ISDP Multi-file Download Tool interface for selecting files by place name. This allows users to locate all files in the system based on a county, township, quad, or city extent. Once a particular set of place names have been chosen (e.g., County: Decatur, City: Greensburg), the user is presented with a list of available files for that geographic area. Users can then select the specific files they wish to download using convenient check boxes.



**Figure 2.** The ISDP Multi-file Download Tool's download status window. This view allows users to monitor download progress and verify that files have been downloaded successfully.