



Archiving and Distributing Indiana Historic Sanborn Maps™

PROJECT COLLABORATORS

Indiana University

- Research Technologies GIS Support Group
- Libraries' Government Information Services

uitsgis@indiana.edu
libet2@indiana.edu

PROJECT INFORMATION

This project archives and distributes the Indiana Sanborn 1883-1966 Historic Maps via the Indiana Spatial Data Portal (ISDP). This project archived all 11,517 map images in both TIFF and PDF formats on Indiana University's Scholarly Data Archive (SDA). The SDA is located at both Indiana University Bloomington and Indianapolis campuses, providing automatic off-site copies of data for disaster recovery. Both the larger TIFF and the smaller PDF Sanborn images are available for spatial discovery via the Indiana Spatial Data Portal (ISDP). The public domain Sanborn images (1883-1923) which represent 87% of the dataset are available for download. Users may contact the staff at IU's Government Information Services to request copyright restricted images (1924 – 1966) once they discover the images they need via the ISDP interface.

WHERE TO FIND IT

<http://gis.iu.edu>

ACKNOWLEDGEMENTS

This project was sponsored in part by IndianaView.



Indiana Spatial Data Portal

ISDP Home

- ▶ View Data
- ▶ Download Data
- ▶ Dataset Information
- ▶ Support

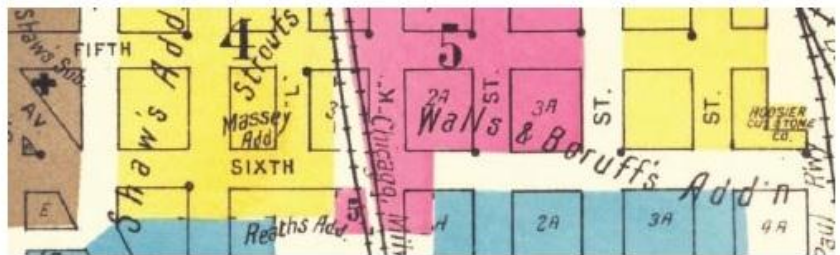
Indiana Sanborn Historic Maps 1883-1966

Download

- ▶ Single File Interface
- ▶ Multi-file Download Tool
- ▶ Data Directory

Related Links

- ▶ Metadata
- ▶ Data Provider



Dataset Basics

Founded in 1867 the Sanborn Map Company was the primary American publisher of fire insurance maps for nearly 100 years. The Fire Insurance Maps aided insurance agents in estimating fire insurance liabilities in urban areas. The maps provide a detailed account of urban development and change in communities during the early twentieth century. Sanborn maps are large-scale (1:600) and depict street layouts, building footprints, building materials, utility lines, street names, street and sidewalk widths, property boundaries, building use, and house and block numbers. The Sanborn Company reached a peak in production during the 1930s and reduced its efforts to isolated revisions in the 1960s. Sanborn produced Indiana maps between 1883 and 1966.