



Indiana Water Quality Atlas

Project Development, The Polis Center at Indiana University Purdue University Indianapolis (IUPUI)
(E-Mail: polis@iupui.edu)

PROJECT INFORMATION:

The Indiana Water Quality Atlas (IWQA) was developed through an EPA 319 Water Quality Grant. The IWQA allows GIS empowered web exploration of the watersheds of Indiana. It provides environmental data, infrastructure data, and demographic statistics in tables, customized maps, and pie charts. The information presented includes the data created and/or compiled by various state agencies, the Indiana Geologic Survey (IGS), Indiana Department of Environmental Management (IDEM), and the 2000 Federal Census. The Assessment Information Management System database (AIMS) is a comprehensive water quality dataset maintained by the Indiana Department of Environmental Management. This tool allows the user to graph the IDEM sampling sites, contained in the AIMS database, by selected parameters for the entire state of Indiana, and see the results in a table. The IWQA

- provides download access to all of the datasets and metadata viewable on this website
- presents data through easy to use interface (Figure 1)
- allows the user to query the AIMS database (Figure 2)
- provides data at no cost
- makes data readily available to the general public

The IWQA aims to spur water quality and watershed management, land use planning, and data exploration by facilitating access to a wide variety of spatially and temporally referenced data through a common interface. It also promotes interdisciplinary research by providing new tools to combine, analyze, and display multi-dimensional data from a wide array of disciplines. Examples of capabilities include spatial and attribute queries, on-line geocoding, and custom mapping.

COLLABORATORS:

Major Groups contributing data and resources to develop and maintain the Indiana Water Quality Atlas include:

- The Polis Center at IUPUI
- Indiana Geologic Survey (IGS)
- Indiana Department of Environmental Management (IDEM)
- Natural Resources Conservation Service (NRCS)
- Indiana GIS Council (IGIC)
- Upper White River Watershed Alliance (UWRWA)
- Indiana Land Resources Council (ILRC)

WHERE TO FIND IT:

<http://www.in.gov/idem/5219.htm>

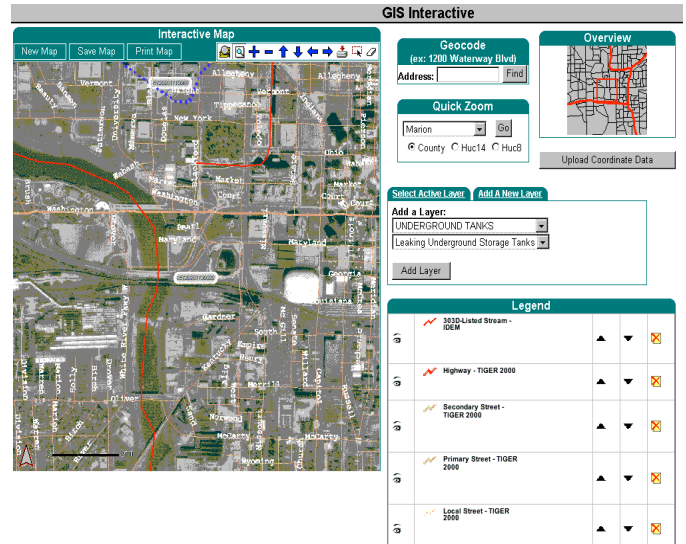


Figure 1. Through the use of distributed database and Internet GIS technology, IWQA allows the user to create customized maps employing a wide variety of datasets from many sources as well as on-line geocoding.

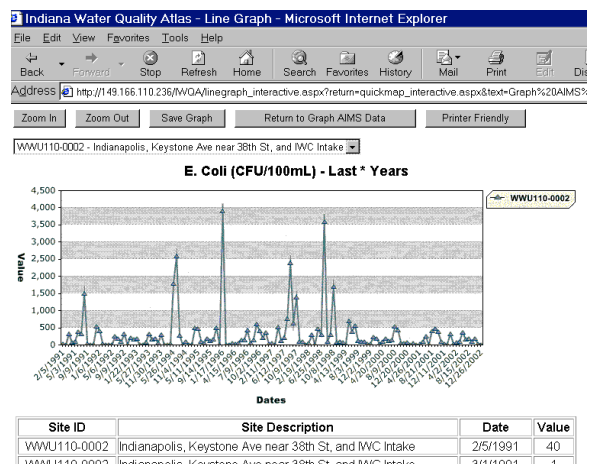


Figure 2. This sample graph shows the levels of E. Coli present at a particular site on Fall Creek when samples were taken between Feb. 1991 and Dec. 2002.