

INDIANAMAP WEBSITE TRAINING

Jennifer Dubeansky, Indiana Geographic Information Council (IGIC) info@iupui.edu

The State Data Center is a resource managed by the Indiana State Library with assistance from three coordinating agencies, including the Indiana Geographic Information Council (IGIC). In addition to its main base of operations in Indianapolis, the Center maintains a network of affiliates made up of libraries, nonprofits, universities and other organizations. Collectively, they provide public access to a wide range of state and national statistics. Staff members assist patrons in locating census, demographic, economic, and agricultural records in paper and electronic formats.

The IndianaMap is a single, digital map of the state that includes some of the most commonly used types of information: streets, addresses, waters, elevation, aerial photography, etc. This repository is exactly the type of resource the Data Center focuses on.

Recently, the IndianaMap interactive website was re-envisioned and redesigned. The addition of new datasets, tools, and capabilities changed website dramatically. In an effort to inform the public about these changes, IGIC presented a series of train-the-trainer sessions specifically developed for State Data Center affiliates.

In July 2008, the online trainings were held. The material highlighted:

- Overview of remote sensing and GIS data
- Datasets found on the website
- How to use the tools
- Basic analysis techniques
- Sharing and saving data

Attendees represented libraries, planning organizations, government agencies, economic developers, nonprofits and universities. By developing online trainings, IGIC was able to reach a far broader audience, allowing affiliates from counties around the state to participate.

IGIC also produced an informational brochure, the “Unofficial User’s Guide,” to assist affiliates and patrons in using the IndianaMap website. Copies were sent to all participants, and it can be downloaded from the IGIC website www.igic.org.

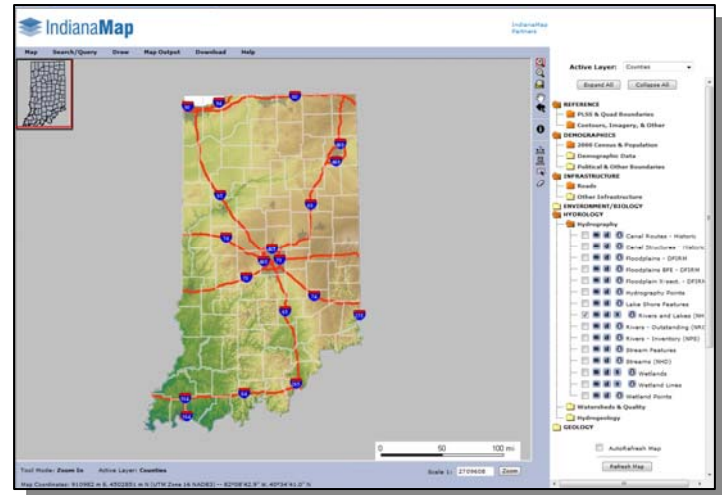


Figure 1. The IndianaMap interactive website. www.indianamap.org

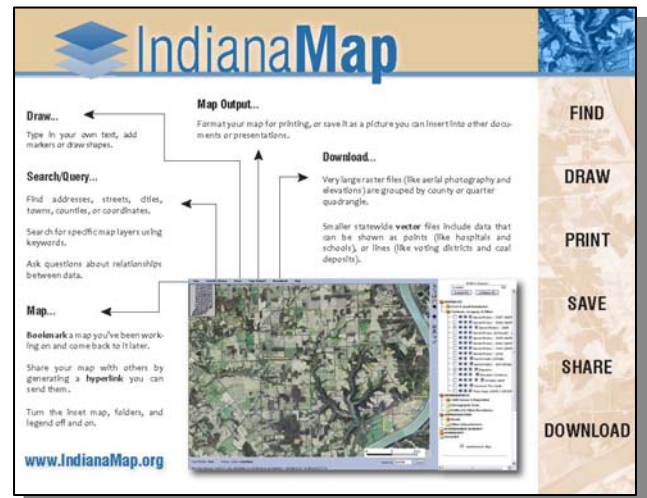


Figure 2. The Unofficial User’s Guide outlines the tools and layout of the IndianaMap website.

FOR FURTHER READING:

Go to: <http://www.igic.org>