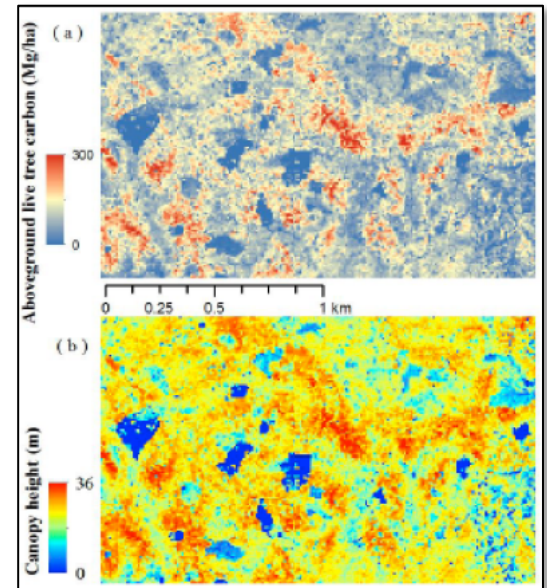




INDIANAVIEW HISTORY AND SUCCESSES

IndianaView is a state-wide consortium of 15 universities and institutions in Indiana. The vision for IndianaView is to facilitate and promote the sharing and use of public domain remotely sensed imagery (from both satellite and aerial platforms) by Indiana universities, four-year colleges, community colleges, K-12 institutions, libraries, museums, government agencies and the private sector. IndianaView was accepted into the national AmericaView consortium in 2004 with Purdue University as the lead institution. Programs and activities sponsored by IndianaView include:

- Mini-grants have supported 27 projects conducted in seven institutions. These projects promote the use of remotely sensed imagery in K-16 education, facilitate the use of remote sensing data to address state-wide issues such as urban development, and provide easier access to remote sensing image data. (www.indianaview.org/fact_sheets.html)
- Student Scholarships provided undergraduate and graduate students with opportunities to participate in remote sensing projects that are relevant to the state and/or their community. (www.indianaview.org/fact_sheets_student_scholarships.html)
- Interactive class lessons for high school students to learn geospatial skills were developed as a result of a partnership with the Geography Educators' Network of Indiana. (www.iupui.edu/~geni)
- Freeware application and tutorials are available for analyzing remotely sensed imagery and determining long-term impacts of a change in land use. (engineering.purdue.edu/~biehl/MultiSpec)



Student scholarship project to model carbon in Indiana state forests. (a) High-resolution forest carbon map in Yellowwood State Forest, Indiana; (b) LiDAR-based canopy height metric.



Mini-grant project involving IGIC & GENI working with a Noble County High School educator and middle school students to generate GIS lesson materials and an ArcGIS Online Story Map Timeline for Noble County.



A graduate student is helping middle school students work through the flood activity using MultiSpec Online during a geospatial session for Purdue's TOTAL Camp in June 2017.

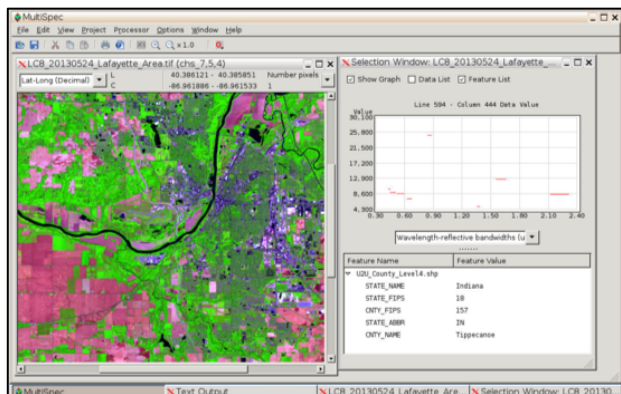
IndianaView is a member of the AmericaView Consortium, a nationally coordinated network of academic, agency, non-profit, and industry partners and cooperators that share the vision of promoting and supporting the use of remote sensing data and technology within each state. AmericaView is funded by USGS grant agreement G18AP00077.



AmericaView Website:
www.AmericaView.org
Christopher McGinty, Executive Director:
chris.mcginty@americaview.org
Lisa Wirth, Program Manager:
lisa.wirth@americaview.org
Rebecca Dodge, Board Chair:
rebecca.dodge@msutexas.edu

INDIANAVIEW CURRENT ACTIVITIES

- IndianaView welcomes Valparaiso University to the consortium.
- IndianaView is providing scholarships for six undergraduate & graduate students from the member educational institutions to participate in remote sensing projects relevant to the state and/or their community.
- IndianaView is also funding the mini-grant program to provide a means for partner institutions to participate via geospatial projects relative to the state of Indiana.



MultiSpec session from within a web browser illustrating a false color Landsat 8 image and a plot of the reflective data values and list of features in a shape file for a selected pixel in the image.



Purdue High School GIS Day: Larry Biehl is presenting material on geospatial technologies to high school students before they work on their activities.

- Support Earth Observation Day as part of HS GIS Day that occurs each fall at Purdue.
- Continue to leverage other projects to update the MultiSpec remote sensing application and create new tutorials. The code is being prepared to be released as open source software for Linux, MacOS and Windows.

INDIANAVIEW CONSORTIUM MEMBERSHIP

The IndianaView Consortium is composed of researchers and educators from 15 universities and institutions including Ball State University, Indiana State University, Indiana University, Indiana University – Purdue University at Indianapolis, Indiana University – South Bend, Martin University, University of Notre Dame, Valparaiso University, Geography Educators' Network of Indiana, Indiana Geographic Information Council, and the Indiana Space Grant Program. Consortium members have participated in the IndianaView mini-grant and scholarship programs with projects involving K-12 education, general public outreach, research studies and educational lab development.



INDIANA UNIVERSITY



PURDUE UNIVERSITY



IUPUI INDIANA UNIVERSITY
PURDUE UNIVERSITY
INDIANAPOLIS



VALPARAISO UNIVERSITY



PURDUE UNIVERSITY
NORTHWEST



BALL STATE UNIVERSITY

Others:

- Indiana University – South Bend
- Indiana Space Grant Consortium

IndianaView Principal Investigator:

LARRY BIEHL

PURDUE UNIVERSITY

765-494-3529

biehl@purdue.edu



www.indianaview.org